

COLLABORATIVE LAW  
INSTITUTE OF MINNESOTA

## Newsletter | March 2023

*There once was a disgruntled father  
Who thought child support was a bother.  
The Order he read  
Made him angry instead  
So he squandered his last bottom dollar.*

~Gregory R. Solum, Attorney at Law

*This limerick is in response to the new Child Support Guidelines effective January 1, 2023.*

### Board of Directors



Rebecca A. Randen  
Attorney / Partner  
Randen, Chakirov & Grotkin LLC  
612.281.2151  
[rebecca@rcglawoffice.com](mailto:rebecca@rcglawoffice.com)

### President's Message | Rebecca Randen

I know many of you through Collaborative Practice, CLI social events and trainings, and even from traditional family practice. I sincerely hope this year will bring me the opportunity to know those of you I have not had the pleasure of meeting. My name is Rebecca Randen, and I am serving on the Collaborative Law Institute Board of Directors as this year's president. This will also be my third and last year in my term serving on the Board.

I feel honored to serve CLI and to give my time to an organization that serves its community with excellence, compassion, and such a high degree of professionalism.  
This year's theme is "The Future is Now."... [READ MORE](#)

---

## CLI Board of Directors 2023



**President, Rebecca Randen**  
**Immediate Past President, Allison Maxim**  
**Treasurer, Brett Jensen;**  
**Directors:**  
**Brian Burns, Judith Johnson, Melissa Miroslavich,**  
**Brittany Pearson, \*Gay Rosenthal, Gregory Solum,**  
**George Zaske**

[Click here](#) for Board Contacts 2023

*\*Not included in the photo taken at the Board Retreat as Gay joined the board retreat by Zoom from Texas.*

---

## Welcome Newly Elected CLI Board Members



Melissa Miroslavich -  
Read about Melissa, [Click Here](#)  
Attorney & Mediator  
Galowitz Olson, PLLC  
10390 39th Street North, Lake Elmo, MN 550542  
651.777.6960  
[Melissa@galowitzolson.com](mailto:Melissa@galowitzolson.com)  
[www.galowitzolson.com](http://www.galowitzolson.com)



Brittany Stephens Pearson  
Read about Brittany, [Click Here](#)  
Attorney  
Pearson Family Law, PLLC  
3300 Edinborough Way, Suite 550, Edina, MN 55435  
952.428.7880 [brittany@pearsonlawmn.com](mailto:brittany@pearsonlawmn.com)  
[www.pearsonlawmn.com](http://www.pearsonlawmn.com)

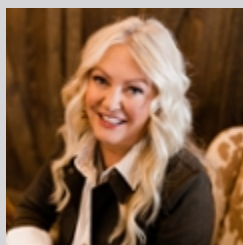


Judith Johnson, Attorney  
Collaborative Divorce Options  
3300 Edinborough Way, Suite 550,  
Edina, MN 55435  
952.405.2015  
[judith\\_h\\_johnson@hotmail.com](mailto:judith_h_johnson@hotmail.com)  
[www.collaborativedivorceminnesota.com](http://www.collaborativedivorceminnesota.com)

---

## Membership

**Welcome CLI's newest members**



[Click here](#) to learn about Lesa

Lesa Koski  
Attorney, Mediator  
Koski Law & Mediation, PLLC  
724 Bielenberg Woodbury,  
MN 55225  
651.214.5057 [lesa.koskii@gmail.com](mailto:lesa.koskii@gmail.com)  
[www.lesakoski.com](http://www.lesakoski.com)



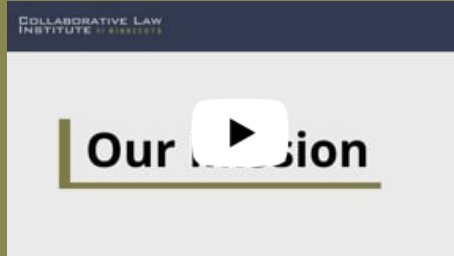
[Click here](#) to learn about Ryan

Ryan McLaughlin  
Attorney  
McLaughlin Law  
PO Box 25922, Woodbury  
MN 55125  
763.316.8323 [mclaughlinlawllc@gmail.com](mailto:mclaughlinlawllc@gmail.com)  
[www.mclaughlin-law.com](http://www.mclaughlin-law.com)

**CLI  
MINNESOTA  
MEMBERSHIP  
DIRECTORY**



[Click here Join CLI MN](#)



**CLI Members!**  
Have you updated your  
Find A Professional profile lately? [Click here](#) to see what potential clients see.  
Need help with your profile? Contact [cli@collaborativelaw.org](mailto:cli@collaborativelaw.org)

## Membership Committee Chair Megan Yates

The Collaborative Law Institute of Minnesota was the first of more than 90 Collaborative Practice Groups that have formed around the world and is committed to significantly expanding the awareness and use of the Collaborative process in Minnesota. CLI provides members with the support they need to develop a strong Collaborative practice. Now is a great time to consider adding the Collaborative Process to your practice as more and more clients are asking for this as a choice.

## Membership Includes:

- All dues categories include both CLI and IACP [www.collaborativepractice.com](http://www.collaborativepractice.com) \*Whole Group Dues and are billed on a 12-month rolling renewal period.
- All categories are auto renewed until you notify [cli@collaborativelaw.org](mailto:cli@collaborativelaw.org) that you want to cancel your membership.
- New members start their annual membership on the date they join.
- A new member has never been a member or is a past member whose membership lapsed 2-years prior to their re-join date.
- All new members are required to complete the Collaborative Law Institute's New Collaborative Experience 2-day basic training (or International Academy of Collaborative Professionals basic training) and 40-hour family law mediation training (Rule 114) within 12 months of joining CLI.
- Professional and Newly Licensed Professional Members are eligible to feature their profiles on the website.

*\*If you receive a renewal notice from IACP, please contact the CLI administrative office before paying the invoice. [Click here](#) to learn more about your IACP membership benefits!*

---

## Committee Updates

### Legislative Task Force Call for volunteers Brittany Pearson | Chair

The CLI Legislative Task Force is looking for help in 2023 to brainstorm and consider whether and what legislative matters may be of interest to CLI as we move forward. This is a low-commitment opportunity to join other members of CLI in idea-generation. If you have ideas or opinions (or think you might someday have ideas or opinions 😊), please reach out! After interested members are identified, we will schedule an initial time to discuss the topic. By joining an initial conversation, you are not necessarily committing to any long-term legislative work, so don't hesitate! Contact Brittany Stephens Pearson at [brittany@pearsonlawmn.com](mailto:brittany@pearsonlawmn.com)

---

### Sunshine Committee Gay Rosenthal, Chair

Recognizing life events of CLI MN members. Contact Gay at [ghrosenthal@comcast.net](mailto:ghrosenthal@comcast.net)

### 2022 CLI Annual Forum Recap Megan Yates | Chair

Thanks to everyone for joining us at the St. Paul Hotel for the 2022 Annual Forum back in December! We spent a day and a half together, congregating, educating and innovating (the having fun part goes without saying—I mean, you have met the AJW crew, right?!? 😊). In addition to the amazing talent of local, homegrown, innovative practitioners (I'm looking at you, Kimberly Miller, Chad Olson, Christine Schmidt, Deb Clemmensen, and Louise Livesay 😊), we had the opportunity to learn from some "greats" on the regional, national, and international scales. AJ Skogerson, Collaborative Attorney and Co-Owner of The Law Shop, drove up... [READ MORE](#)

---

### Technology Committee Carl Arnold & Greg Solum, Co-chairs

Interested in sharing your tech savvy? Find out more and email Carl at [carl@arnoldlawmediation.com](mailto:carl@arnoldlawmediation.com)

### **Public Education Committee** **Angela Heart & Audra Holbeck | Co-chairs**

The PE Committee is busy working on several initiatives including the Family Law Institute CLI Booth (volunteers still needed!), responses and action items from the CLI Member Survey, tracking the SEO project with the Tech Committee, reinvigorating the CLI blog and social media in 2023, and looking for opportunities to show-case CLI and CP at public events.

---

### **Forum 2023 Committee** **Allison Maxim Chair**

Volunteers needed to help with Forum 2023 planning. Please email Sandy at [cli@collaborativelaw.org](mailto:cli@collaborativelaw.org) for details and if you are interested.

---

### **Training Committee** **Louise Livesay & Rebecca Randen, Co-chairs**

Can you help with ideas for training topics and speakers? Join the the Training Committee and help plan educational trainings for the CLI and the greater Family Law Community. Contact: [louise@livesaylawoffice.com](mailto:louise@livesaylawoffice.com)

---

## **Kids' Corner**



### **Listening to Kids to Help Their Parents Make Good Decisions** **Deb Clemmensen**

An esteemed colleague recently asked me to explain to potential clients how I keep kids in the child-inclusive process for creating a Parenting Plan from getting the impression they are now in charge of decision-making. I replied that I explained to kids in the initial get-to-know-you- meeting that my job is to be a good listener to everyone in the family. And because I have the privilege of talking with my favorite family members — kids!— I get to share their ideas and perspectives with their parents to help parents do the best possible job of making decisions.

In my experience, most kids do not want the responsibility of making decisions about the parenting time schedule. But they do...[READ MORE](#)

---

## **Leadership Circle**

[Click here for information on joining the CLI Member Leadership Circle](#)

2023

~ Carl Arnold ~ Brian Burns ~ Deb Clemmensen ~ Brett Jensen ~  
~ Louise Livesay ~ Kari McGuire ~ Kimberly Miller ~  
~ Chad Olson ~ Ron Ousky ~ Gay Rosenthal ~ Barb Seibel ~  
~ Megan Yates ~ Stu Webb ~ Amy Wolff ~ George Zaske

## CLI Training Opportunities

Don't miss these important training opportunities provided by the  
CLI Training Committee

Louise Livesay-Al & Rebecca Randen, Co-Chairs

Visit the CLI website calendar for details and registration links

[www.collaborativelaw.org/about-us/calendar](http://www.collaborativelaw.org/about-us/calendar)

### Risks and Dangers of Social Media

March 7 | Virtual

2 Credits approved CLE & Psych BOD

Pending LMFT

[Click here for March 7](#)

FAMILY LAW PROFESSIONAL TRAINING  
HOSTED BY CLI MINNESOTA



**RISKS AND DANGERS OF  
SOCIAL MEDIA**

**Tuesday, March 7, 2023**  
9:40 AM - 12:00 PM  
Virtually on Zoom  
**NO FEE**  
2 Credits APPROVED  
MN CLE & MN Psych BOD  
PENDING LMFT

Presenter  
**Steven Bradley**  
Professional Liaison, OurFamilyWizard®



With an extensive law enforcement career focusing on investigating crimes against persons, specializing in sex crimes, child abuse, domestic violence, and crimes against the elderly, Steven Bradley was recruited by the FBI to start a taskforce that would investigate technology and cyber related crimes. As a National Trainer for the past 20 years, presenter Steven Bradley is known for his real-world practical education and has provided training throughout the United States and U.S Territories on many related topics.

COLLABORATIVE LAW  
INSTITUTE OF MINNESOTA

REGISTRATION AT [WWW.COLLABORATIVELAW.ORG/ABOUT-US/CALENDAR](http://WWW.COLLABORATIVELAW.ORG/ABOUT-US/CALENDAR)

## **Guardianship and Conservatorship – What are they and how they can impact a divorce?**

March 16 | In-person

2 Credits pending CLE & Psych BOD, LMFT

[Click here for March 16](#)

**FAMILY LAW PROFESSIONAL TRAINING  
HOSTED BY CLI MINNESOTA**

**GUARDIANSHIP AND CONSERVATORSHIP – WHAT ARE THEY  
AND HOW THEY CAN IMPACT A DIVORCE?**



**Presenters**  
**Family Law Attorneys**  
**George Zaske**  
**and**  
**Gregory Solum**

**March 16, 2023**  
**9:00 AM - 11:30 AM | In-person**  
3300 Edinborough Way  
Edina, MN 55435, 1st Floor Training Room  
**Mbrs CLI \$25 | Non CLI Mbrs: \$40**  
2 Credits Pending CLE, LMFT, MN Psych BOD

**COLLABORATIVE LAW  
INSTITUTE OF MINNESOTA**

**DETAILS AT [WWW.COLLABORATIVELAW.ORG/ABOUT-US/CALENDAR](http://WWW.COLLABORATIVELAW.ORG/ABOUT-US/CALENDAR)**

## **New Collaborative Experience Training**

May 11, 12 & 18 | In-person

18 Credits pending CLE & Psych BOD, LMFT

[Click here May 11, 12, 18](#)



COLLABORATIVE LAW  
INSTITUTE OF MINNESOTA

CLI Minnesota  
Presents  
New Collaborative  
Experience Training  
May 11,12,18, 2023

Join the next session of  
New Collaborative Experience Training.  
For details and registration  
visit the CLI MN website calendar at:  
[www.collaborativelaw.org/about-  
us/calendar/](http://www.collaborativelaw.org/about-us/calendar/)



Collaborative Practice is simple and elegant in principle, but requires a mindset and skill set to put into effective practice. The New Collaborative Experience training is designed to address the needs of multidisciplinary professionals to learn Collaborative concepts, see them in action, and boost confidence in building this model into your own practice.

IACP | [www.collaborativepractice.com](http://www.collaborativepractice.com)



**International Association of Collaborative Professionals Has Been Nominated For The Nobel Peace Prize**

**Gregory R. Solum**

A unique and effective conflict resolution model has been nominated for the 2023 Nobel Peace Prize. From its humble beginnings in Minnesota, the International Association of Collaborative Professionals has expanded worldwide. It offers divorcing families an alternative to divisive Family Court litigation.

The idea was conceived by Stu Webb, a Minneapolis family law attorney, in 1990. Since the majority of marriage dissolutions ultimately settle, his inspiration was to have both parties...[READ MORE](#)



## IACP Forum | October 22- 25, 2023

IACP's Annual Networking and Educational Forum is the world's largest and most preeminent gathering of Collaborative and Consensual Dispute Resolution professionals from around the globe! Save the date to your calendar and check out details by clicking the button below.

[IACP Forum Details](#)

## CLI Annual Partners Committed to Collaborative Practice



*Rainbow Mortgage Inc.*

### Platinum Partner | Rainbow Mortgage

#### Mortgage and Divorce News New Year - New Beginnings

Dave Jamison | Rainbow Mortgage

It has been an interesting start to the year for mortgage rates! If you have been watching my videos, you have noticed that rates have come down from their highs in the mid 7's to mid to low 6's depending on the day and then recently go right back up again to almost 7. The reason for the wild swings is mostly due to INFLATION data and jobs information. Without going into too much detail. We had good news on both Jobs and inflation in January causing the rates to go down. However, due to some creative reporting, the numbers in February did not support lower rates thus the increase. While I do not have a crystal ball we are anticipating rates to move down in the coming months. The new year also brought some changes to the mortgage sector. The first is...[READ MORE](#)



---

## Gold Partner | Cross Country Mortgage

### 3 Things to Be Aware of When Clients Are Doing a Qualifying Name Delete Assumption on Their Mortgage

Brett Leschinsky | Crosscountry Mortgage

Because most divorcing clients have mortgage rates in the 3's and market rates are currently in the 6's, it makes more sense to do a Qualifying Name Delete Assumption (QNDA) rather than refinancing to remove a name. Here are 3 things to be aware of when your client OR the opposing party is expecting to do an assumption...

1. Don't assume every client can do a QNDA. Not all servicers allow for them or the client may not qualify for one. And co-signers are not allowed to help them qualify. So it's always a good idea to make sure they can do a QNDA prior to the decree being finalized...[READ MORE](#)



---

## Gold Partner | Pickle Realty

Learn more about New Gold Member Lisa Proechel

Lisa Proechel, Certified Divorce Real Estate Expert, Real Estate Planner | Keller Williams Integrity Realty

In my studies of divorce real estate, I learned about collaborative law, as well as the litigative approach. I met Ron Ousky at a social event sponsored by CLI and he said that I really needed to take the Collaborative Law training. I missed the MN training, so in Oct 2022, I took the training in Phx. I was really impressed by the model and approach to the whole person/family. It fits a lot of my values of helping people to create a win/win outcome...[READ MORE](#)

## Thank You CLI Annual Partners!

### PLATINUM PARTNER



*Rainbow Mortgage Inc.*

Rainbow Mortgage, Inc. | Dave Jamison  
952.405.2090 | [Dave@RainbowMortgageInc.com](mailto:Dave@RainbowMortgageInc.com)  
[www.rainbowmortgageinc.com](http://www.rainbowmortgageinc.com)

### SILVER PARTNER



Edina Realty | Jennifer Morris  
952.937.8600 | [JenniferMorris@EdinaRealty.com](mailto:JenniferMorris@EdinaRealty.com)  
[www.edinarealty.com/jennifer-morris-realtor#](http://www.edinarealty.com/jennifer-morris-realtor#)

### GOLD PARTNERS



CrossCountry Mortgage, LLC | Brett Leschinsky  
612.590.7896 | [brett@mortgageforest.com](mailto:brett@mortgageforest.com)  
[www.crosscountrymortgage.com/brett-leschinsky/divorce/](http://www.crosscountrymortgage.com/brett-leschinsky/divorce/)



The Pickle Property - Team Keller Williams Integrity Realty  
Lisa Proechel  
651-203-1835 | [lisaproechel@kw.com](mailto:lisaproechel@kw.com)  
[www.mndivorceagent.com](http://www.mndivorceagent.com)



Our Family Wizard | Rachael Howitz  
612.481.0164 | [rhowitz@ourfamilywizard.com](mailto:rhowitz@ourfamilywizard.com)  
[www.ourfamilywizard.com](http://www.ourfamilywizard.com)

### Collaborative Law Institute of Minnesota

Mailing Address:

4707 Highway 61 North, White Bear Lake, MN 55110

Administrative Contact: 952.405.2010 | [cli@collaborativelaw.org](mailto:cli@collaborativelaw.org)

Website: [www.collaborativelaw.org](http://www.collaborativelaw.org)

Blog: [www.collaborativedivorceoptions.com](http://www.collaborativedivorceoptions.com)

### Connect with Us:

Facebook

Pinterest

